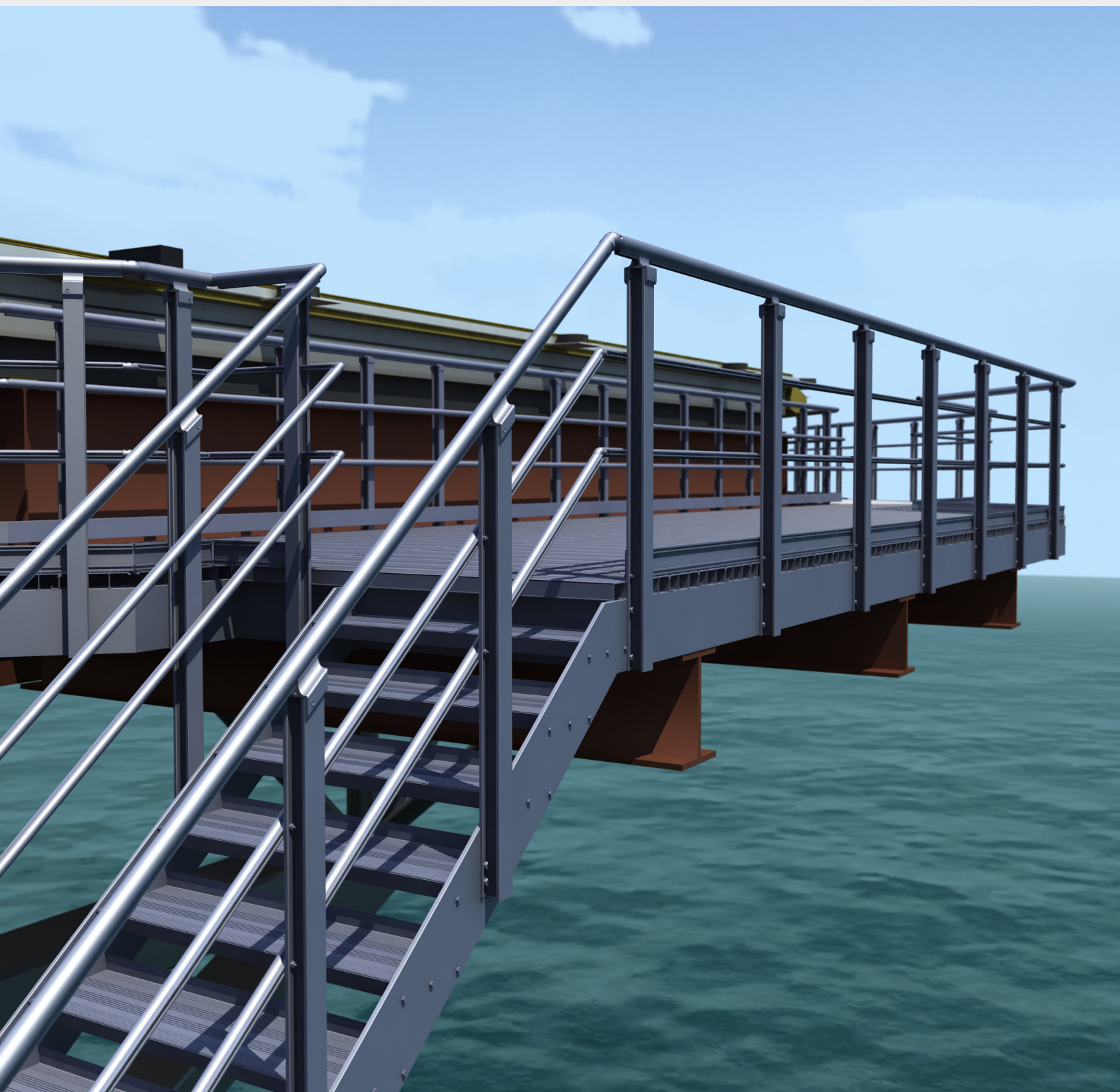


Quicklock™ Aluminium Handrail & Walkway System



First in Safety. First in Service.



The QUICKLOCK™ Aluminium Handrail and Walkway System



Aluminium Offshore has designed and produced a series of extrusions and components which can be quickly bolted and locked together using fasteners and a patented locking system. This allows the modular building block system to achieve an infinite number of layouts. No welding or special tools are involved for its installation. The system can also be retrofitted in place of steel or GRP railings and walkways.

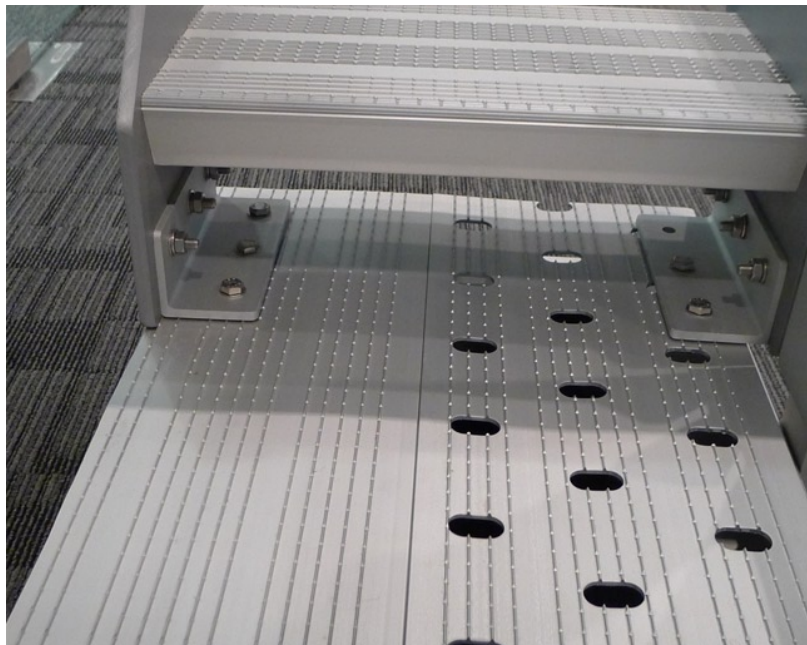
There's more. Because it is made of aluminium alloy, QUICKLOCK™ is light yet strong, durable and maintenance free. Complying with the latest international design standards, QUICKLOCK™ is also aesthetically pleasing.

MAINTENANCE FREE

- Marine grade aluminium alloys
- Stainless steel 316 fasteners
- No painting required
- No downtime for maintenance activities

LIGHT WEIGHT

- 50-60% vs traditional steel systems
- Easy handling, installation



QUICK INSTALLATION

- Patented QUICKLOCK™ joint system enables easy assembly
- Completely weld-free installation
- Special rotatable elbow joints allows for 360° rotation
- Light weight aids installation and reduces handling costs
- Incredibly quick installation via fasteners

DURABLE

- Aluminium alloys used have the same tensile strength as mild steel
- System is designed for maximum robustness and safety
- Meets the most stringent offshore requirements (NMA and Norsok)

FLEXIBLE

- Modular design for maximum flexibility
- Easy damage repair
- Designed to cater for difficult site conditions
- Special components allow turns and bends of any angle
- Able to modify easily to accept other attachments



WARRANTY
*20 year warranty against
any structural corrosion*

SAFETY

- Designed to international standards
- Rounded corners and smooth surfaces
- No protruding parts
- Recessed fasteners and rounded bolt heads

COST SAVINGS

- Cost effective in initial installation
- Significant life savings in maintenance cost
- Lower transport and installation costs

AESTHETICS

- Wide range of finishes and colours. Components can be anodized / powder coated
- Unique shapes extruded in aluminium
- Numerous shape permutations possible with the same components

Specifications

ALUMINIUM EXTRUSIONS AW 6082-T6

- Min yield strength is 260N/mm²
 - Min ultimate tensile strength is 310N/mm²
- * AW 6005A aluminium extrusions are available upon request

FASTENERS SS316

ALUMINIUM JOINTS & END CAP Aluminium 535.0 / AW 6063-T6

FINISH Mill finish in natural grey

* Anodized finish and powder coat finish are available upon request

DESIGN STANDARD

- BS EN 1999-1-1
- BS EN 1090-3
- BS EN 1991-1-1
- Norsok C-002

FAQ

Q: How are the handrails connected onto an existing steel structure?

A: There are two ways to mount handrails on an existing steel support: top mount and side mount. Both connection methods use fasteners and no welding is involved. This hotwork-free method can save valuable time and manpower for installation and reduce risk.

Q: How do you prevent bimetallic galvanic corrosion at the connections?

A: Connections are electrically insulated via neoprene, teflon or stainless steel as per codes. Although aluminium and carbon steel are not too far from each other on the galvanic table, we err on the side of caution and insulate the two metals.

Q: What is the design life of the Quicklock™ system?

A: The Quicklock™ system is manufactured from corrosion resistant marine aluminium alloys of the same type as our time tested aluminium helidecks. The handrail system should outlast the structure it is placed on. Furthermore, we offer a 20 year warranty against structural corrosion.

Q: Is the Quicklock™ system approved by major classification societies and rules?

A: Yes, the Quicklock™ system has an extensive track record of use on various projects approved by DNV, ABS et al.

Q: How often do I have to carry out maintenance for the handrails?

A: Our handrails are designed to be maintenance free for their lifetime. They do not need painting and will not rust like steel handrails. No cracks will develop unlike GRP rails. We recommend visual checks according to your planned inspection schedule to check if any physical damage has occurred though.

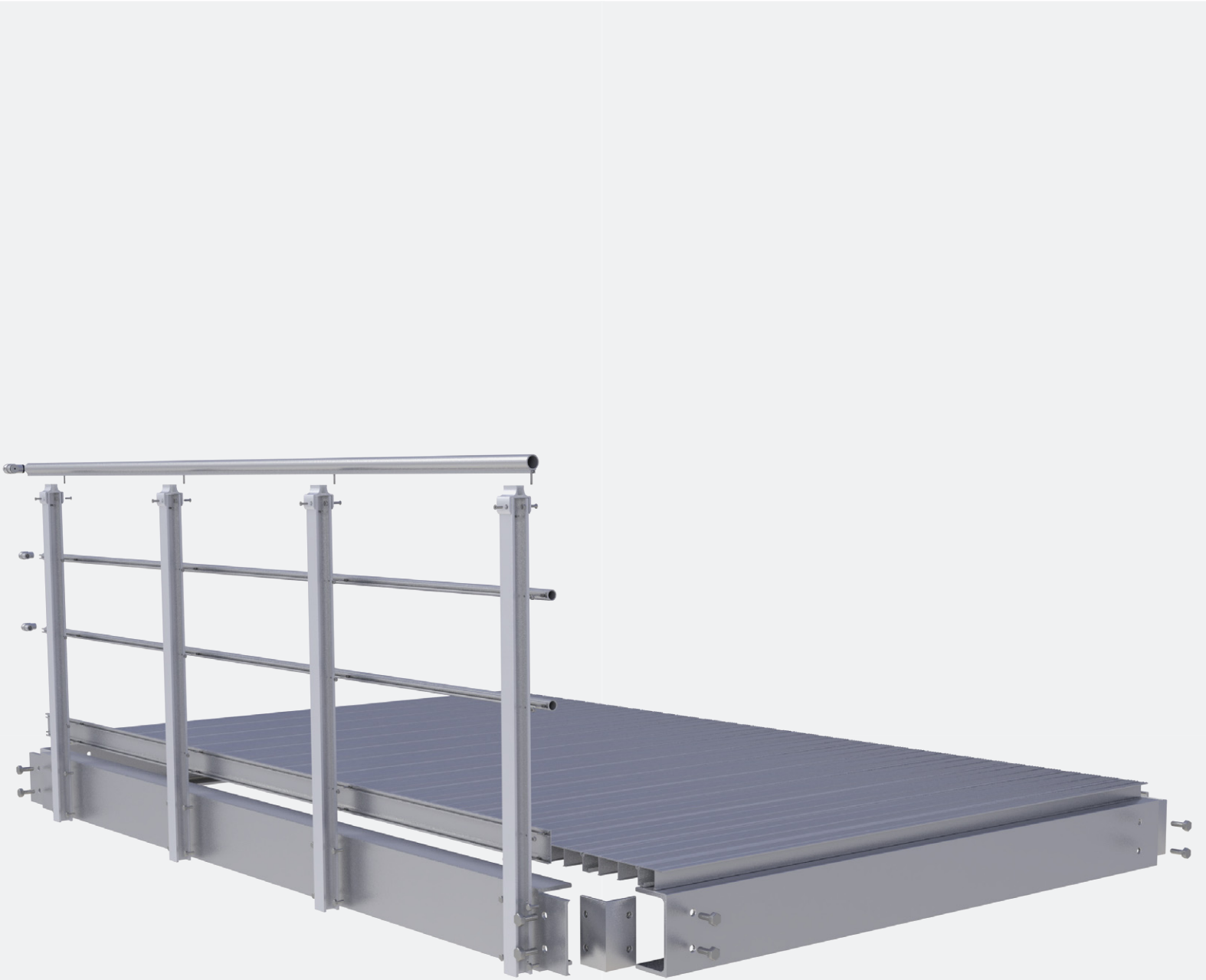
QUICKLOCK™ ALUMINIUM HANDRAIL & WALKWAY SYSTEM

Potential applications on
an offshore oil platform



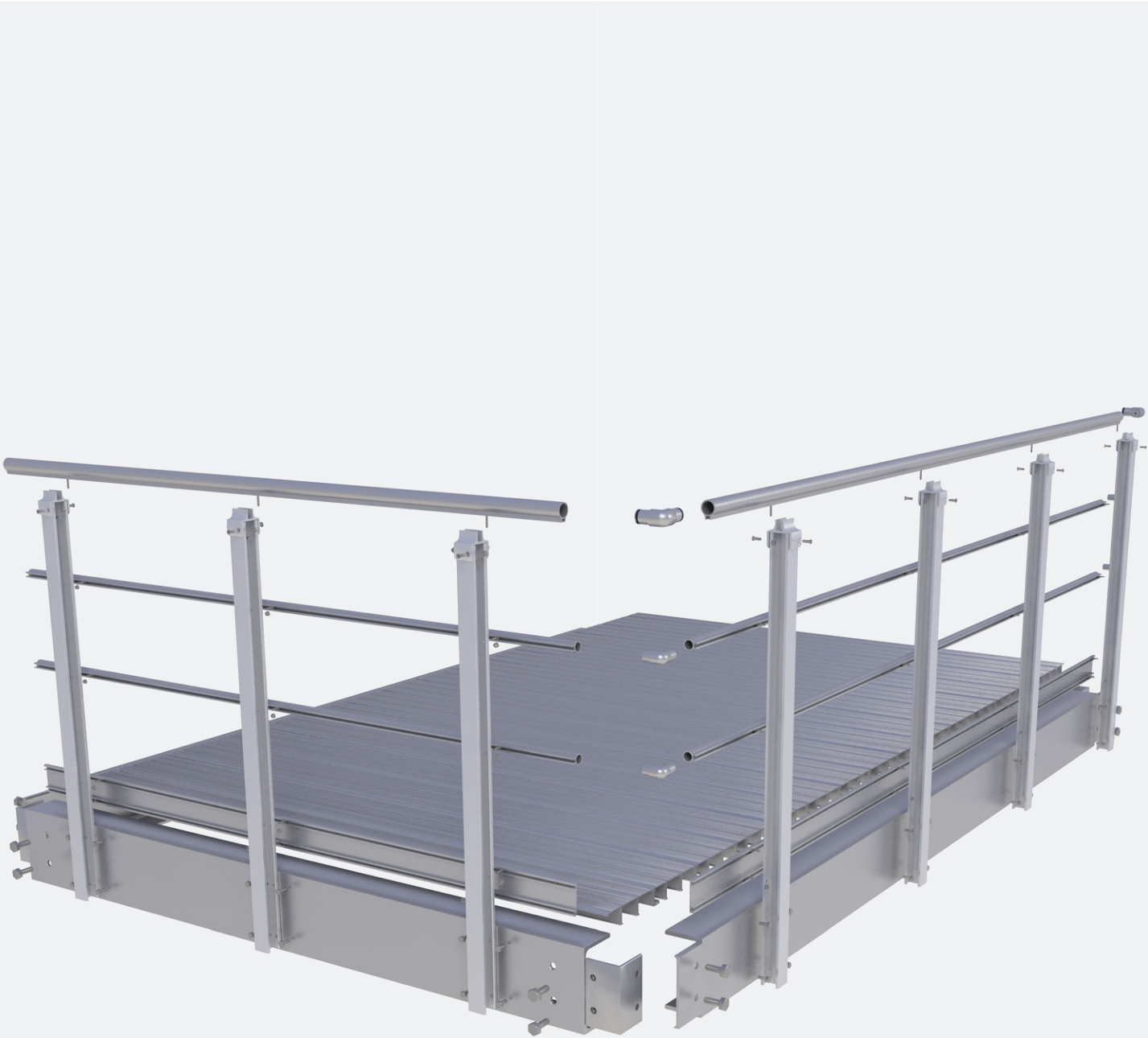
EXPLODED VIEWS OF QUICKLOCK™ ALUMINIUM
HANDRAIL & WALKWAY SYSTEM

STRAIGHT SECTION



EXPLODED VIEWS OF QUICKLOCK™ ALUMINIUM
HANDRAIL & WALKWAY SYSTEM

BEND SECTION



EXPLODED VIEWS OF QUICKLOCK™ ALUMINIUM HANDRAIL & WALKWAY SYSTEM

STRAIGHT SECTION TO STAIR



CONTACT US

SINGAPORE

Aluminium Offshore Pte Ltd
2 International Business Park
#02-26 The Strategy Tower 2
Singapore 609930

Tel: 65-6316-1232
Fax: 65-6316-1282
Email: aopl@aluminium-structures.com
Website: www.aluminium-offshore.com

QUICKLOCK™ ALUMINIUM HANDRAIL & WALKWAY SYSTEM
is a registered trademark of Aluminium Offshore Ptd Ltd

Copyright © August 2014 Aluminium Offshore Pte Ltd. All Rights Reserved.